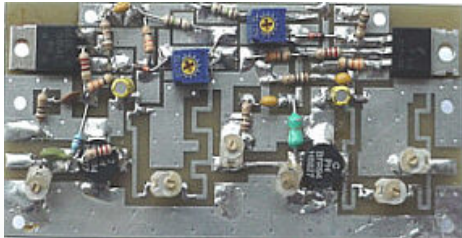


AMP-05WTV 500 mW POWER AMPLIFIER 470-860 MHz

This is a high quality Professional UHF TV linear amplifier-driver in A class. It is broadband for all UHF TV channels from 470 MHz- 860 MHz. This amplifier needs only 2 mW RF power for 500 mW output. Maximum power output is 700 mW / 50 ohms with 10 mW driving. Power supply is 18 V / 0.5 A. Extremely linear this amplifier has been made for a small TV stations and studios. It is ideal as an exciter for a high power TV stages. Everything is assembled and tested! Power transistors are made by Philips. Warranty one year includes all components except output transistors! A highest quality PC board is double sided and silver plated. This amplifier must be installed on a heat sink. Size: 4" X 2".



FEATURES:

- 470 MHz – 860 MHz
- 24 V battery operated
- Very long range

Technical Specifications	AMP-05WTV
FREQUENCY RANGE:	470 MHz – 860 MHz
IMPEDANCE:	50 ohm IN/OUT
RF INPUT	MAX 10 mW
GAIN	25 dB
DC POWER:	24 V
INTERMODULATION DISTORTION:	-49 dBc
POWER OUTPUT:	0.75 W
CURRENT CONSUMPTION:	890 mA
CLASS OF OPERATION	LINEAR A
MIN POWER	0.5 W



www.rf-video.com,

Email to: info@rf-video.com

Copyright. © 2002-2012