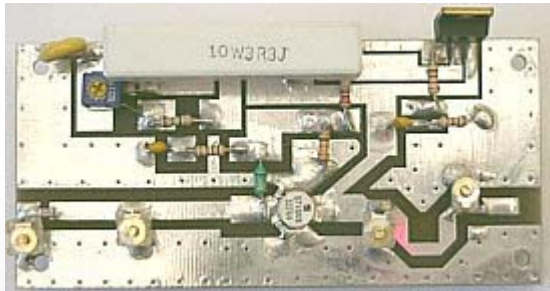


# AMP-5WDTV 5W POWER AMPLIFIER

# 470-860 MHz

This is a highest quality Professional UHF TV linear amplifier 5 W RF power in A class. It is fully broadband for all UHF channels from 470 MHz- 860 MHz. This amplifier needs 1 W RF power for a full 5 W output/50 ohms. Low intermodulation distortion makes this unit perfect for digital or analog broadcast television. Power supply is 28 V /1.5A. Extremely linear this amplifier has been made for small TV stations and studios. It is ideal as an exciter for a high power TV stages. This amplifier comes assembled and tested! Power transistor is made by SGS Thompson. Warranty one year includes all components except output transistor! A highest quality PC board is double sided and silver plated. This amplifier must be installed on a heat sink .



## **FEATURES:**

- 470 MHz – 860 MHz
- 28 V battery operated
- Very long range

| Technical Specifications    | AMP-5WDTV                  |
|-----------------------------|----------------------------|
| FREQUENCY RANGE:            | 470 MHz – 860 MHz          |
| IMPEDANCE:                  | 50 ohm IN/OUT              |
| RF INPUT                    | MIN POWER 0.8 W, MAX-1.2 W |
| GAIN                        | 9 dB/470 MHz               |
| DC POWER:                   | 26 V                       |
| INTERMODULATION DISTORTION: | -49 dBc                    |
| POWER OUTPUT:               | 5 W                        |
| CURRENT CONSUMPTION:        | 890 mA                     |
| INPUT/OUTPUT CONNECTORS:    |                            |
| POWER PLUG:                 | STANDARD 2.1 mm            |



[www.rf-video.com](http://www.rf-video.com),

Email to: [info@rf-video.com](mailto:info@rf-video.com).

Copyright. © 2002-2012