

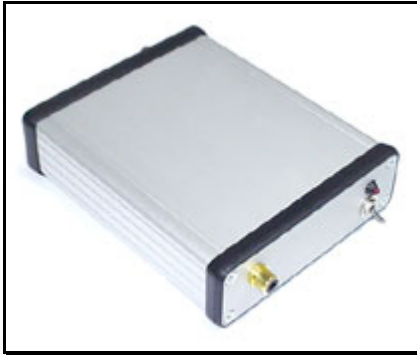
LX-900B VIDEO TRANSMITTER

900 MHz

LX-900B is audio/video transmitter for 900 MHz. LX-900B is using negative AM modulation same as a broadcast TV. Tested RF power is 1.8 W. This transmitter is extremely stable. It has built-in VSWR and temperature protection as well. This unit is excellent for Law enforcement and military applications. Recommended receiver is RM 900.

HIGH POWER VIDEO TRANSMITTER

FEATURES:



- 916.6 MHz
- BNC antenna connector
- 12 V battery operated
- RCA video input
- Excellent picture quality
- Long range
- Recommended receiver DCV-900
- Perfect for covert operations

Technical Specifications	LX-900B
Operating Frequencies:	916.6 MHz, 906 MHz
Channel:	# 1, 2
DC Voltage:	12 V – 14.4 V
RF power:	1800 mW
Minimum required voltage:	9 V
Battery power:	12 V
Video distortion:	5%
Maximum range:	3000 ft los +
Video Format:	PAL, NTSC
Current Consumption:	1480 mA / 12 V
Antenna:	N/A
Antenna Connector:	BNC
Impedance:	50 ohms
Video Connector:	RCA F
Video Impedance:	75 ohms
Video level:	1 V
Temperature Range:	-20 +75* C
Dimensions:	5.0" X 4.0 " X 1.2"
Weight:	250 grams
Modulation:	Negative AM



www.rf-video.com,
Email to: info@rf-video.com.
Copyright. © 2002-2005