

---

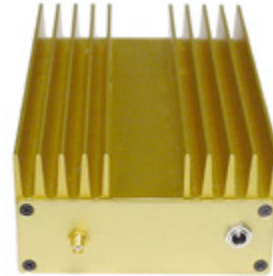
# ZH-1214L

## HIGH POWER AMPLIFIER

### 5 W from 1.2 GHz-1.4 GHz

---

This is an excellent high power linear RF amplifier for 1.2 GHz band. It is a perfect solution for FM TV excitors, labs or experiments. It has 5 W RF power with driving input of 20 mW. Required power supply is 12 V / 2 A. Gain 30 dB. It comes with BNC or N female connectors.



Technical Specifications	
Operating Frequencies:	1200 MHz- 1400 MHz
Operating class:	LINEAR AB
DC Voltage:	12 V
RF power:	5 W MAX.
Input power:	20 mW
Minimum required voltage:	12 V
Battery power:	12 V – 14 V
Video distortion:	2%
Video Format:	N/A
Current Consumption:	2 A
Gain:	30 dB
Antenna Connector:	N TYPE or BNC
Impedance:	50 OHMS
Temperature Range:	-25+70 *C
Dimensions:	6" X 4 " X 2"
Weight:	300 grams

**ELECTRICAL CHARACTERISTICS** ( $T_{case}=+25^{\circ}C$ ,  $Z_G=Z_L=50\Omega$ , unless otherwise specified)

PARAMETER	CONDITIONS	MIN	MAX	UNIT
Frequency Range		1200	1450	MHz
Output Power	$V_{DD}=12.5V$ $P_{in}=20\text{ mW}$	4.9	5	W
Total Efficiency	25			%
2nd Harmonic	$V_{DD}=12.5V$ $P_{in}=20\text{ mW}$	-25		dBc
Stability	100			%
Load VSWR Tolerance	Load VSWR=20:1 With max. power out		No degradation or destroy	