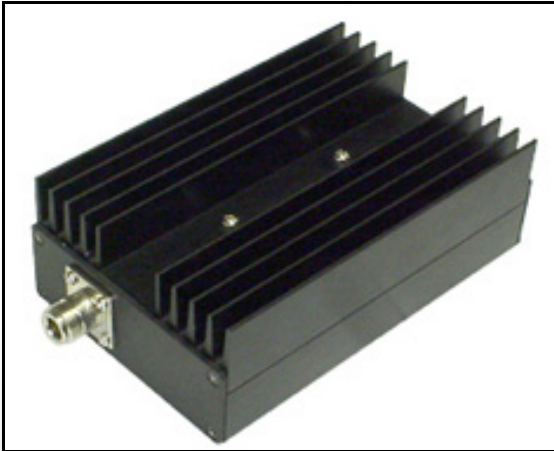


60-90 MHz

ZH-6090/H 30 W HIGH POWER AMPLIFIER

This is a tested high quality professional 30 W RF amplifier that requires minimum driving input of 50 mW for the maximum of 30 W RF power output. It is broadband in 60 MHz- 90 MHz and doesn't require any tuning or adjusting. Power supply is 12 V/ 7 A. Gain 28 dB. N female connectors Input / Output 50 ohms impedance. Class of operation AB.

Dimensions: 6" X 4" X 2"



FEATURES:

- 60 MHz – 90 MHz
- N antenna connector
- 12 V battery operated
- 2.1 mm power plug
- Ga-As FET technology
- Very long range
- Recommended for 2.4 GHz transmitters

Technical Specifications	ZH-6090/H
Operating Frequencies:	60 MHz- 90 MHz
Operating class:	Linear AB
DC Voltage:	12 V
RF power:	30 W
Input power:	50 mW, max. 85 mW
Minimum required voltage:	10 V
Battery power:	12 V - 14 V
Video distortion:	N/A
Video Format:	N/A
Current Consumption:	7.0 A / 12 V
Antenna:	N/A
Antenna Connector:	BNC, N on request
Impedance:	50 ohms
Temperature Range:	-40 +75° C
Dimensions:	6" X 4 " X 2"
Weight:	300 grams



www.rf-video.com,

Email to: info@rf-video.com.

Copyright. © 2002-2012